

125L*75Wmm 折页

Background Light

There are five color options for the LED light behind the bubbler: white, green, blue, red, purple and an off option. Click power button three times quickly to change between colors.



Portability

The Don is a portable E Rig for you to enjoy anywhere. Be sure to put the sleeve on the mouthpiece when you are on the go, so that the water does not leak and the mouthpiece will be

6

6

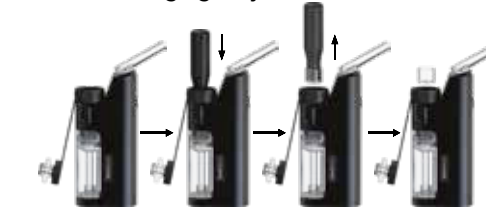
Cleaning

Preparation: Remove mouthpiece base.

1. Clean carb cap and glass mouthpiece by soaking in alcohol. Rinse clean with water.
2. Clean threads and connector in the base with a cotton swab.
3. Use the cup-removal tool to take the quartz cup out, then clean the cup with a cotton swab.
4. To clean the atomizer, unscrew from base, and drop the fully assembled atomizer into alcohol for 30 minutes.

*Be careful removing the atomizer after it was just used, it will be hot to the touch. Allow time to cool.
5. All parts of the water tank is detachable. Pull it out and take it apart into pieces.

6. Clean other parts of the airpath with a q-tip.
WARNING: After cleaning, allow all parts to thoroughly dry before use. (alcohol is flammable)
*Do not get the atomizer base wet - it's electric!
*Do NOT attempt to disassemble the atomizer before submerging fully assembled into alcohol.



7

7



Troubleshooting

1. **No Atomizer:** It means the atomizer is not well connected with the base. Make sure the threads and connector is clean. Screw the atomizer until tight.
2. **NTC Error:** The atomizer may not connect well with the base. Try to rescrew the atomizer.
3. **Low Power:** You have to get your Don charged.
4. **Shorted:** Atomizer is screwed too tight. Loosen it a little bit.
5. **Get water into the mouth:** You have filled the bubbler with too much water. Fill it no more than 1/3.
6. **Vapor not as big as expected:** Set the temperature higher. Check if the mouthpiece and the bubbler is well connected to make sure the airpath is sealed.

8

8

Warranty

Your purchase of The Don includes a lifetime warranty on all its parts. Each Don is hand tested in our US warehouse before shipping to ensure quality.

Be sure to scratch and scan the QR code located on the box of this device to collect rewards and activate your warranty. This lifetime warranty applies to customers within the United States only. Please contact us directly at support@thekindpen.com if you are outside of the US.

Thank you for purchasing The Kind Pen. #BeKind & Take It EZ. For more information, please visit www.thekindpen.com

@the_kindpen

封底



User Manual

封面

Introduction

The Don is the world's first Smart E Rig with precise temperature. All details are shown as below.



1

1

Charging

1. Fully charge The Don with included USB-C Charger for 2 or 3 hours. The battery symbol on the OLED screen pulses while charging and turns solid when complete.



How To Use

1. **Fill the bubbler with water.** When filling the bubbler with water, less is always best. Fill just no more than 1/3 height of the water tank, otherwise, you might get water in your mouth.

2

2



2. Load the atomizer.

Remove the carb cap. Use the included packing tool to place contents on the bottom surface of the bowl (not the side). Do not overfill. Overfilling can damage your atomizer. Replace carb cap on top of atomizer. Protect your carb cap by using the tether provided.



3

3

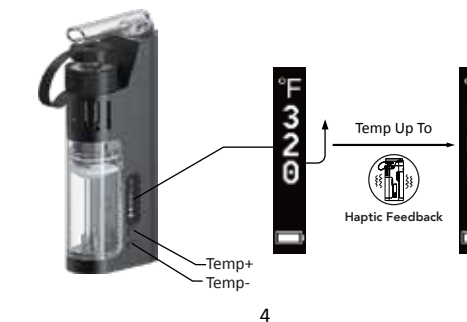
3. Power On/Off

Press the power button 5 times quickly to turn on/off. The device will vibrate when on/off.



4. Set your desired temperature

The Don comes with full range temperature settings from 320°F to 800°F (160°C to 427°C). Click the +/- buttons to choose your temperature setting. When device reaches the set temperature, it will vibrate



4

4

Dual Working Modes

1. **Manual mode:** Simply hold the power button and inhale to vape. The longer you inhale, the more vapor will be created.
2. **Sesh mode:** Press the button two times quickly to activate a continuous heating period. It will take about 20 seconds to reach the preset temperature. Then The Don will vibrate when ready. Simply inhale to vape, without needing to hold the button down. This period will last 60s at the steady temperature. The device will vibrate again when this period is over.

Fahrenheit & Celsius Switch

Hold the Temp+/- button together for 2s to change between "F" and "C".



5

5